

# Product Catalogue



**MIDDLE EAST**

EFFECTIVE 1ST JUNE 2017



The connection you can trust.

# The Connection you can trust

Philmac is a global leader in the design and manufacture of specialist fittings and valves for polyethylene pipelines.

With a strong pedigree in product innovation, Philmac revolutionized how to connect polyethylene (PE) pipes by developing the world's first all plastic compression fitting back in 1968. Philmac products are now seen as the international benchmark in quality and design.

The exceptional quality and unique design of Philmac products has driven a strong expansion into global markets, where today Philmac exports around 50% of its production

output to more than 30 countries in regions such as North and Central America, the UK, Ireland, Europe and Asia. Philmac has had a long and proud history exporting its products throughout the Middle East, and is active in the UAE, Oman, Bahrain, Jordan and Qatar.

Philmac is proudly part of the Aliaxis group, the world's largest integrated supplier of high performance plastic pipe systems.

With pipe connection solutions for irrigation, mains water supply, gas and mining applications, Philmac is the connection you can trust.



## Contents

### 3G® Metric Imperial Compression Fittings

Key Advantages	4-5
Range Information	6-9

### 3G® Metric Fittings Compression Fittings

Key Advantages	10-11
Range Information	12-15

### Safelok® Metric Compression Fittings

Key Advantages	16-17
Range Information	18-21

### Universal Transition Coupling (UTC®)

Key Advantages	22-23
Range Information	24-25

### Valves

Ball Valves - Key Advantages	26-27
Foot and Non-Return Valves - Key Advantages	28-29
Ratio Valves - Key Advantages	30-31
Range Information	32-33

### BSP Threaded Fittings

Key Advantages	34-35
Range Information	36-39

### Micro Irrigation

Key Advantages	40-41
Range Information	42-55

**Philmac**®

The connection you can trust.

For more information visit

[www.philmac.com.au](http://www.philmac.com.au)

# 3G<sup>®</sup> Metric/Imperial<sup>™</sup> Compression Fittings



## The universal fitting for both metric and imperial PE pipe.

The Philmac Metric/Imperial<sup>™</sup> compression fitting is a revolutionary step forward for PE pipe jointing. Connections can now be made to both Metric (BS6572/BS6730) and Imperial PE pipe (BS1972/3284 and IRS 135 Heavy Gauge) from the one fitting from either end. And, the innovative design means that inserts are no longer required to connect imperial pipe.

Metric/Imperial<sup>™</sup> provides the ultimate in flexibility, reducing both inventory and complexity.

### Flexibility

With one fitting you can connect to both Metric and Imperial PE pipe (BS1972/3284 and IRS 135 Heavy Gauge). The innovative design means that inserts are no longer required to connect to imperial pipe. It also removes the need for dedicated fitting and inserts providing the ultimate in flexibility.

### Made from Advanced Materials

The fitting is manufactured from lightweight, high performance thermoplastic materials with outstanding impact, UV and corrosion resistance. The materials used are non-toxic and taint free.



Choose from a wide selection of fittings (from 16mm to 63mm) including straight and reducing joiners and tees, elbows, end connectors, caps and blanking plugs.



### No loose components

Grip ring and seal remain captive in the body when the nut is removed.

### Minimal pipe twist

The fitting is designed to minimise pipe twist, reducing the risk of untightening joints.

### Slide and Tighten<sup>®</sup>

Incorporating all the benefits of Slide and Tighten<sup>®</sup> technology with 100% positive feedback.

### Pressure Rating

Metric Imperial fittings are rated to PN16.

### Compact Size

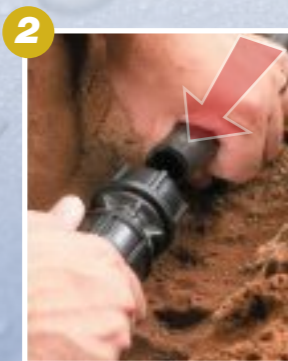
The size of Metric fittings has been kept to a minimum making this fitting ideal to use in compact spaces.

### Disassembly

The fitting has been designed so the grip ring is released as the nut is backed off, enabling the pipe to be simply pulled out of the fitting.



1 Cut the pipe square. There is no need to chamfer or lubricate the pipe.



2 Ensure 2 threads are showing and simply slide the pipe in until the first point of resistance is felt.



3 Tighten the nut by hand, and then firmly with a wrench.

# 3G<sup>®</sup> METRIC/IMPERIAL FITTINGS

## RANGE INFORMATION

# 3G<sup>®</sup> METRIC/IMPERIAL FITTINGS

## RANGE INFORMATION

### COUPLERS

(poly x poly)



METRIC/IMPERIAL	SIZE	CARTON QTY
98912200	20 (1/2")	150
98913300	25 (3/4")	100
98914400	32 (1")	65
98915500	40 (1-1/4")	35
98916600	50 (1-1/2")	24
98917700	63 (2")	12

### SLIP COUPLERS

(poly x poly)



METRIC/IMPERIAL	SIZE	CARTON QTY
98901220	20 (1/2")	90
98901330	25 (3/4")	70
98901440	32 (1")	40
98901550	40 (1-1/4")	25
98901660	50 (1-1/2")	20
98901770	63 (2")	12

### REDUCING TEES

(poly x poly x poly)



METRIC/IMPERIAL	SIZE	CARTON QTY
98933200	25 (3/4") x 20 (1/2")	55
98933400	25 (3/4") x 32 (1")	40
98934300	32 (1") x 25 (3/4")	35
98935300	40 (1-1/4") x 25 (3/4")	20
98935400	40 (1-1/4") x 32 (1")	20
98936300	50 (1-1/2") x 25 (3/4")	16
98936400	50 (1-1/2") x 32 (1")	16
98936500	50 (1-1/2") x 40 (1-1/4")	12
98937300	63 (2") x 32 (1")	10
98937400	63 (2") x 40 (1-1/4")	10
98937600	63 (2") x 50 (1-1/2")	9

### TEES

(poly x poly x FI BSP)



METRIC/IMPERIAL	SIZE	CARTON QTY
98942100	20 (1/2") x 1/2"	110
98942200	20 (1/2") x 3/4"	110
98943100	25 (3/4") x 1/2"	70
98943200	25 (3/4") x 3/4"	60
98943300	25 (3/4") x 1"	60
98944100	32 (1") x 1/2"	50
98944200	32 (1") x 3/4"	45
98944300	32 (1") x 1"	40
98944400	32 (1") x 1 1/4"	35
98945100	40 (1-1/4") x 1/2"	20
98945200	40 (1-1/4") x 3/4"	20
98945400	40 (1-1/4") x 1"	20
98945500	40 (1-1/4") x 1 1/2"	20
98946100	50 (1-1/2") x 1/2"	20
98946200	50 (1-1/2") x 3/4"	18
98946500	50 (1-1/2") x 1 1/2"	15
98946600	50 (1-1/2") x 2"	15
98947600	63 (2") x 2"	9

### REDUCING COUPLERS

(poly x poly)



METRIC/IMPERIAL	SIZE	CARTON QTY
98913200	25 (3/4") x 20 (1/2")	120
98914200	32 (1") x 20 (1/2")	80
98914300	32 (1") x 25 (3/4")	70
98915300	40 (1-1/4") x 25 (3/4")	50
98915400	40 (1-1/4") x 32 (1")	40
98916300	50 (1-1/2") x 25 (3/4")	30
98916400	50 (1-1/2") x 32 (1")	30
98916500	50 (1-1/2") x 40 (1-1/4")	25
98917400	63 (2") x 32 (1")	20
98917500	63 (2") x 40 (1-1/4")	20
98917600	63 (2") x 50 (1-1/2")	16

### TEES

(poly x poly x poly)



METRIC/IMPERIAL	SIZE	CARTON QTY
98932200	20 (1/2")	90
98933300	25 (3/4")	50
98934400	32 (1")	30
98935500	40 (1-1/4")	18
98936600	50 (1-1/2")	12
98937700	63 (2")	8

### TEES

(poly x poly x MI BSP)



METRIC/IMPERIAL	SIZE	CARTON QTY
98993100	25 (3/4") x 1/2"	80
98993200	25 (3/4") x 3/4"	75

# 3G<sup>®</sup> METRIC/IMPERIAL FITTINGS

## RANGE INFORMATION

### END CONNECTORS

Male adaptors  
(poly x MI BSP)



METRIC/IMPERIAL	SIZE	CARTON QTY
98922100	20 (1/2") x 1/2"	240
98922200	20 (1/2") x 3/4"	240
98922300	20 (1/2") x 1"	220
98923100	25 (3/4") x 1/2"	150
98923200	25 (3/4") x 3/4"	150
98923300	25 (3/4") x 1"	150
98924200	32 (1") x 3/4"	90
98924300	32 (1") x 1"	90
98924400	32 (1") x 1 1/4"	90
98924500	32 (1") x 1 1/2"	85
98925300	40 (1-1/4") x 1"	55
98925400	40 (1-1/4") x 1 1/4"	55
98925500	40 (1-1/4") x 1 1/2"	55
98925600	40 (1-1/4") x 2"	50
98926500	50 (1-1/2") x 1 1/2"	35
98926600	50 (1-1/2") x 2"	32
98927500	63 (2") x 1 1/2"	24
98927600	63 (2") x 2"	22

### ELBOWS

(poly x MI BSP)



METRIC/IMPERIAL	SIZE	CARTON QTY
98972100	20 (1/2") x 1/2"	220
98973200	25 (3/4") x 3/4"	120
98974300	32 (1") x 1"	75

### END CONNECTORS

Female adaptors  
(poly x FI BSP)



METRIC/IMPERIAL	SIZE	CARTON QTY
98982100	20 (1/2") x 1/2"	230
98982200	20 (1/2") x 3/4"	220
98982300	20 (1/2") x 1"	180
98983100	25 (3/4") x 1/2"	150
98983200	25 (3/4") x 3/4"	150
98983300	25 (3/4") x 1"	130
98984200	32 (1") x 3/4"	80
98984300	32 (1") x 1"	80
98984400	32 (1") x 1 1/4"	75
98985400	40 (1-1/4") x 1 1/4"	50
98985500	40 (1-1/4") x 1 1/2"	50
98986500	50 (1-1/2") x 1 1/2"	35
98986600	50 (1-1/2") x 2"	35
98987600	63 (2") x 2"	20

### ELBOWS

(poly x poly)



METRIC/IMPERIAL	SIZE	CARTON QTY
98952200	20 (1/2")	140
98953300	25 (3/4")	100
98953200	25 (3/4") x 20 (1/2")	90
98954400	32 (1")	50
98955500	40 (1-1/4")	30
98956600	50 (1-1/2")	18
98957700	63 (2")	10

### END CAPS



METRIC/IMPERIAL	SIZE	CARTON QTY
98902900	20 (1/2")	250
98903900	25 (3/4")	160
98904900	32 (1")	100
98905900	40 (1-1/4")	55
98906900	50 (1-1/2")	35
98907900	63 (2")	20

### WALL PLATE ELBOWS

(poly x FI BSP)



METRIC/IMPERIAL	SIZE	CARTON QTY
99322900	3/4" x 1/2"	?
99323900	1" x 3/4"	?

# 3G<sup>®</sup> METRIC/IMPERIAL FITTINGS

## RANGE INFORMATION

### ELBOWS

(poly x FI BSP)



METRIC/IMPERIAL	SIZE	CARTON QTY
98962100	20 (1/2") x 1/2"	230
98962200	20 (1/2") x 3/4"	190
98963100	25 (3/4") x 1/2"	150
98963200	25 (3/4") x 3/4"	120
98963300	25 (3/4") x 1"	110
98964300	32 (1") x 1"	75
98964400	32 (1") x 1 1/4"	70
98965400	40 (1-1/4") x 1-1/4"	45
98965500	40 (1-1/4") x 1 1/2"	45
98966500	50 (1-1/2") x 1 1/2"	30
98966600	50 (1-1/2") x 2"	26
98967600	63 (2") x 2"	18

### SPANNERS

For Philmac fittings



SIZE	
20 - 32 Plastic	90702431
32 - 63 Alloy	90702421
50 - 110 Alloy	90705711

# 3G<sup>®</sup> Metric Compression Fittings



## Dedicated Metric fittings that provide a connection you can trust

3G<sup>®</sup> Metric fittings are the perfect choice to connect metric sized polyethylene pipe thanks to Philmac's unique **Slide and Tighten<sup>®</sup>** technology. Each fitting is pre-assembled and ready to use so there's no need to disassemble the fittings or prepare the pipe prior to use. Simply cut the PE pipe square and slide it into the fitting until you feel the first point of resistance and then tighten the nut to the flange on the body of the fitting.

With Philmac's 3G<sup>®</sup> Metric compression fittings, just slide and tighten and the job's done!

### Visual stop

The flange on the body of the fitting acts as a visual cue to indicate when the nut is fully tightened. Once the nut touches the flange on the body, the fitting is in a fully tightened state.

### Minimal pipe twist

The fitting is designed to minimise pipe twist, reducing the risk of untightening joints.

### No loose components

Grip ring and seal remain captive in the body when the nut is removed.

### Interchangeability

Safelok<sup>®</sup> and 3G<sup>®</sup> Metric components are all interchangeable as they share a common body.

### Made from Advanced Materials

The fitting is manufactured from lightweight, high performance thermoplastic materials with outstanding impact, UV and corrosion resistance. The materials used are non-toxic and taint free.



Choose from a wide selection of fittings (from 16mm to 63mm) including straight and reducing joiners and tees, elbows, end connectors, caps and blanking plugs.

### Slide and Tighten<sup>®</sup>

Incorporating all the benefits of **Slide and Tighten<sup>®</sup>** technology with 100% positive feedback.

### Pressure Rating

3G<sup>®</sup> Metric fittings are rated to PN16.

### Compact Size

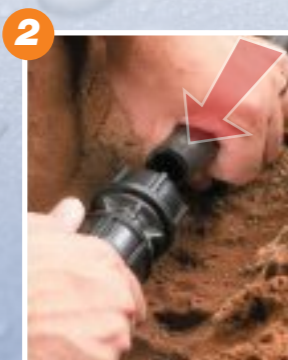
The size of Metric fittings has been kept to a minimum making this fitting ideal to use in compact spaces.

### Disassembly

The fitting has been designed so the grip ring is released as the nut is backed off, enabling the pipe to be simply pulled out of the fitting.



1 Cut the pipe square. There is no need to chamfer or lubricate the pipe.



2 Ensure 2 threads are showing and simply slide the pipe in until the first point of resistance is felt.



3 Tighten the nut by hand, and then with a wrench to the point where the nut is touching the flange on the body of the fitting. Do not tighten beyond this point.

# 3G<sup>®</sup> METRIC FITTINGS

## RANGE INFORMATION

# 3G<sup>®</sup> METRIC FITTINGS

## RANGE INFORMATION

### COUPLERS

(poly x poly)



METRIC	SIZE	CARTON QTY
70 7111 00	16 x 16	240
70 7122 00	20 x 20	150
70 7133 00	25 x 25	100
70 7144 00	32 x 32	65
70 7155 00	40 x 40	35
70 7166 00	50 x 50	24
70 7177 00	63 x 63	12

### SLIP COUPLERS

(poly x poly)



METRIC	SIZE	CARTON QTY
70 7012 20	20 x 20	90
70 7013 30	25 x 25	70
70 7014 40	32 x 32	60
70 7015 50	40 x 40	35
70 7016 60	50 x 50	20
70 7017 70	63 x 63	12
97 8017 70	63 x 63	10

### REDUCING TEES

(poly x poly x poly)



METRIC	SIZE	CARTON QTY
70 7332 00	25 x 25 x 20	55
70 7334 00	25 x 25 x 32	40
70 7343 00	32 x 32 x 25	30
70 7353 00	40 x 40 x 25	20
70 7354 00	40 x 40 x 32	20
70 7363 00	50 x 50 x 25	16
70 7364 00	50 x 50 x 32	16
70 7365 00	50 x 50 x 40	12
70 7373 00	63 x 63 x 25	10
70 7374 00	63 x 63 x 32	10
70 7376 00	63 x 63 x 50	9
97 8373 00	63 x 63 x 25	10
97 8374 00	63 x 63 x 32	10
97 8376 00	63 x 63 x 50	7
97 8307 00	110 x 110 x 63	3

### TEES

(poly x poly x FI BSP)



METRIC	SIZE	CARTON QTY
70 7411 00	16 x 16 x 1/2"	200
70 7421 00	20 x 20 x 1/2"	110
70 7422 00	20 x 20 x 3/4"	110
70 7431 00	25 x 25 x 1/2"	70
70 7432 00	25 x 25 x 3/4"	60
70 7433 00	25 x 25 x 1"	60
70 7442 00	32 x 32 x 3/4"	45
70 7443 00	32 x 32 x 1"	40
70 7444 00	32 x 32 x 1-1/4"	35
70 7453 00	40 x 40 x 1"	20
70 7454 00	40 x 40 x 1-1/4"	20
70 7455 00	40 x 40 x 1-1/2"	20
70 7465 00	50 x 50 x 1-1/2"	15
70 7466 00	50 x 50 x 2"	15
70 7474 00	63 x 63 x 1-1/4"	9
70 7475 00	63 x 63 x 1-1/2"	9
70 7476 00	63 x 63 x 2"	9

### REDUCING COUPLERS

(poly x poly)



METRIC	SIZE	CARTON QTY
70 7121 00	20 x 16	180
70 7131 00	25 x 16	120
70 7132 00	25 x 20	120
70 7142 00	32 x 20	80
70 7143 00	32 x 25	70
70 7153 00	40 x 25	50
70 7154 00	40 x 32	40
70 7163 00	50 x 25	30
70 7164 00	50 x 32	30
70 7165 00	50 x 40	25
70 7174 00	63 x 32	20
70 7175 00	63 x 40	20
70 7176 00	63 x 50	16

### TEES

(poly x poly x poly)



METRIC	SIZE	CARTON QTY
70 7311 00	16 x 16 x 16	130
70 7322 00	20 x 20 x 20	90
70 7333 00	25 x 25 x 25	50
70 7344 00	32 x 32 x 32	30
70 7355 00	40 x 40 x 40	18
70 7366 00	50 x 50 x 50	12
70 7377 00	63 x 63 x 63	8

### TEES

(poly x poly x MI BSP)



METRIC	SIZE	CARTON QTY
70 7931 00	25 x 25 x 1/2"	70
70 7932 00	25 x 25 x 3/4"	70

### SLIP TEES

(poly x poly x poly)



METRIC	SIZE	CARTON QTY
70 7032 20	20 x 20 x 20	60
70 7033 30	25 x 25 x 25	50
70 7034 40	32 x 32 x 32	25
70 7035 50	40 x 40 x 40	18
70 7036 60	50 x 50 x 50	10
70 7037 70	63 x 63 x 63	7
97 8037 70 (large bore design)	63 x 63 x 63	6

### SPANNERS

For Philmac fittings



SIZE	
Y-Spanner 1/2" to 1" (20mm-32mm) plastic	40702431
Y-Spanner 1-1/4" to 2" (40mm-63mm)	40705711

### METRIC SPANNERS

For Philmac fittings



SIZE	
90 7024 00	Metric Spanners to suit 20 - 32
90 7047 00	Metric Spanners to suit 32 - 63
90 7060 00	Metric Spanners to suit 50 - 110

# 3G<sup>®</sup> METRIC FITTINGS

## RANGE INFORMATION

# 3G<sup>®</sup> METRIC FITTINGS

## RANGE INFORMATION

### END ADAPTORS

Male adaptors  
(poly x MI BSP)



METRIC	SIZE	CARTON QTY
70 7211 00	16 x 1/2"	360
70 7212 00	16 x 3/4"	360
70 7221 00	20 x 1/2"	240
70 7222 00	20 x 3/4"	240
70 7223 00	20 x 1"	220
70 7231 00	25 x 1/2"	150
70 7232 00	25 x 3/4"	150
70 7233 00	25 x 1"	150
70 7242 00	32 x 3/4"	90
70 7243 00	32 x 1"	90
70 7244 00	32 x 1-1/4"	90
70 7245 00	32 x 1-1/2"	85
70 7253 00	40 x 1"	55
70 7254 00	40 x 1-1/4"	55
70 7255 00	40 x 1-1/2"	55
70 7256 00	40 x 2"	50
70 7263 00	50 x 1"	35
70 7264 00	50 x 1-1/4"	35
70 7265 00	50 x 1-1/2"	35
70 7266 00	50 x 2"	32
70 7275 00	63 x 1-1/2"	24
70 7276 00	63 x 2"	22

### END ADAPTORS

Female adaptors  
(poly x FI BSP)



METRIC	SIZE	CARTON QTY
70 7811 00	16 x 1/2"	230
70 7812 00	16 x 3/4"	230
70 7821 00	20 x 1/2"	230
70 7822 00	20 x 3/4"	220
70 7823 00	20 x 1"	180
70 7831 00	25 x 1/2"	150
70 7832 00	25 x 3/4"	150
70 7833 00	25 x 1"	130
70 7842 00	32 x 3/4"	80
70 7843 00	32 x 1"	80
70 7844 00	32 x 1-1/4"	75
70 7853 00	40 x 1"	50
70 7854 00*	40 x 1-1/4"	50
70 7855 00*	40 x 1-1/2"	50
70 7864 00*	50 x 1-1/4"	35
70 7865 00*	50 x 1-1/2"	35
70 7866 00*	50 x 2"	35
70 7876 00*	63 x 2"	20

### ELBOWS

(poly x MI BSP)



METRIC	SIZE	CARTON QTY
70 7721 00	20 x 1/2"	220
70 7722 00	20 x 3/4"	200
70 7731 00	25 x 1/2"	120
70 7732 00	25 x 3/4"	120
70 7733 00	25 x 1"	100
70 7743 00	32 x 1"	75
70 7744 00	32 x 1-1/4"	70
70 7753 00	40 x 1"	30
70 7754 00	40 x 1-1/4"	30
70 7755 00	40 x 1-1/2"	30
70 7765 00	50 x 1-1/2"	18
70 7776 00	63 x 2"	18

### ELBOWS

(poly x poly)



METRIC	SIZE	CARTON QTY
70 7511 00	16 x 16	240
70 7522 00	20 x 20	140
70 7532 00	25 x 20	100
70 7533 00	25 x 25	90
70 7544 00	32 x 32	50
70 7555 00	40 x 40	30
70 7566 00	50 x 50	18
70 7577 00	63 x 63	10

### END CAPS



METRIC	SIZE	CARTON QTY
70 7019 00	16	360
70 7029 00	20	250
70 7039 00	25	160
70 7049 00	32	100
70 7059 00	40	55
70 7069 00	50	35
70 7079 00	63	20

### WALL PLATE ELBOWS

(poly x FI BSP)



METRIC	SIZE	SIZE
70 7229 00	20 x 1/2"	20 x 1/2"
70 7238 00	25 x 1/2"	25 x 1/2"
70 7239 00	25 x 3/4"	25 x 3/4"
70 7249 00 (Brass)	25 x 3/4"	25 x 3/4"

\*All sizes 1-1/4" and larger have a stainless steel reinforcing ring



# Safelok® Metric Compression Fittings



## Slide and Tighten® for a reliable connection up to 110mm

Safelok® Metric compression fittings are the fitting of choice for industrial applications, where Metric PE pipe is carrying media with chemical, compressed air or dirty water. While the Safelok® Metric range has been designed for industrial applications it works equally well in any application where Metric PE pipe is used in sizes up to 110mm including irrigation and civil applications.

### Slide and Tighten®

No pipe preparation is needed and no force is required to push the pipe past the seal. Simply insert the pipe into the fitting until the first point of resistance is felt and then tighten the nut until it touches the flange on the fitting body.

### Air line safety

In the event that work commences on a live air line the use of Philmac Safelok® Metric Compression fittings will ensure that a warning is given to the user that the line is live. This is because tightening the nut creates the seal. As the nut is loosened the seal is relaxed causing a loud release of air but the grip is maintained on the pipe.



Choose from a wide selection of fittings (from 20mm to 110mm) including straight and reducing joiners and tees, elbows, end connectors, caps and blanking plugs.



### Visual stop

The flange on the body of the fitting acts as a visual cue to indicate when the nut is fully tightened. Once the nut touches the flange on the body, the fitting is in a fully tightened state.

### Rated to PN16

Product is rated to PN16 across the range.

### No loose components

Although disassembly of the fitting is not required, if the nut is removed there is no danger of losing components as they are all retained within the nut.

### Impact Resistance

Safelok® Metric Compression fittings are made from a high grade of polypropylene to provide significant resistance to impact.

### Chemical Resistance

Safelok® Metric Compression fittings are supplied with EPDM seals as standard which means that the fitting can withstand a wide range of chemicals (including many acids) without the need for an additional kit. Alternative seal materials are available as a kit if required.



**1** Cut the pipe square. There is no need to chamfer or lubricate the pipe. Ensure 3 threads are showing.

**2** Slide the pipe into the fitting until the first point of contact is felt. There is no need to force the pipe in.

**3** Tighten the nut by hand (up to 25mm) or with a wrench.

**4** Fitting is fully tightened when the nut butts against the flange of the body.

# SAFELOK® METRIC COMPRESSION FITTINGS

## RANGE INFORMATION

### COUPLERS

(poly x poly)



SAFELOK®	SIZE	CARTON QTY
97 8111 00	16 x 16	200
97 8122 00	20 x 20	180
97 8133 00	25 x 25	110
97 8144 00	32 x 32	55
97 8155 00	40 x 40	30
97 8166 00	50 x 50	20
97 8177 00	63 x 63	10
97 8188 00	75 x 75	6
97 8199 00	90 x 90	8
97 8100 00	110 x 110	4

### REDUCING COUPLERS

(poly x poly)



SAFELOK®	SIZE	CARTON QTY
97 812100	20 x 16	210
97 813100	25 x 16	140
97 813200	25 x 20	120
97 814200	32 x 20	90
97 814300	32 x 25	75
97 815300	40 x 25	47
97 815400	40 x 32	40
97 816300	50 x 25	34
97 816400	50 x 32	30
97 816500	50 x 40	25
97 817400	63 x 32	20
97 817500	63 x 40	17
97 817600	63 x 50	16
97 818700	75 x 63	6
97 819700	90 x 63	8
97 819800	90 x 75	4
97 810700	110 X 63	4
97 810900	110 x 90	5

### END CONNECTOR

(poly x poly x MI BSP)



SAFELOK®	SIZE	CARTON QTY
97 821100	16 x 1/2"	400
97 821200	16 x 3/4"	370
97 822100	20 x 1/2"	290
97 822200	20 x 3/4"	280
97 822300	20 x 1"	280
97 823100	25 x 1/2"	180
97 823200	25 x 3/4"	180
97 823300	25 x 1"	160
97 824200	32 x 3/4"	95
97 824300	32 x 1"	95
97 824400	32 x 1-1/4"	90
97 824500	32 x 1-1/2"	85
97 825300	40 x 1"	55
97 825400	40 x 1-1/4"	55
97 825500	40 x 1-1/2"	50
97 825600	40 x 2"	50
97 826300	50 X 1"	37
97 826400	50 X 1 1/4"	37
97 826500	50 x 1-1/2"	37
97 826600	50 x 2"	35
97 827500	63 x 1 1/2"	22
97 827600	63 x 2"	21
97 827700	63 x 2-1/2"	20
97 828600	75 x 2"	18
97 828700	75 x 2-1/2"	15
97 828800	75 x 3"	9
97 829600	90 x 2"	14
97 829800	90 x 3"	14
97 829900	90 x 4"	14
97 820600	110 x 2"	4
97 820800	110 x 3"	4
97 820900	110 x 4"	4

# SAFELOK® METRIC COMPRESSION FITTINGS

## RANGE INFORMATION

### REDUCING TEES

(poly x poly x poly)



SAFELOK®	SIZE	CARTON QTY
97 8332 00	25 x 25 x 20	65
97 8334 00	25 x 25 x 32	45
97 8343 00	32 x 32 x 25	30
97 8353 00	40 x 40 x 25	23
97 8354 00	40 x 40 x 32	22
97 8363 00	50 x 50 x 25	17
97 8364 00	50 x 50 x 32	12
97 8365 00	50 x 50 x 40	12
97 8373 00	63 x 63 x 25	11
97 8374 00	63 x 63 x 32	10
97 8376 00	63 x 63 x 50	7
97830700	110 x 110 x 63	3

### TEES

(poly x poly x poly)



SAFELOK®	SIZE	CARTON QTY
97 8311 00	16 x 16 x 16	130
97 8322 00	20 x 20 x 20	100
97 8333 00	25 x 25 x 25	60
97 8344 00	32 x 32 x 32	30
97 8355 00	40 x 40 x 40	20
97 8366 00	50 x 50 x 50	12
97 8377 00	63 x 63 x 63	6
97 8388 00	75 x 75 x 75	6
97 8399 00	90 x 90 x 90	3
97 8300 00	110 x 110 x 110	2

### TEES

(poly x poly x MI BSP)



SAFELOK®	SIZE	CARTON QTY
97 8931 00	25 x 25 x 1/2"	70
97 8932 00	25 x 25 x 3/4"	70

### TEES

(poly x poly x FI BSP)



SAFELOK®	SIZE	CARTON QTY
97841100	16 x 16 x 1/2"	170
97842100	20 x 20 x 1/2"	120
97842200	20 x 20 x 3/4"	120
97843100	25 x 25 x 1/2"	80
97843200	25 x 25 x 3/4"	70
97843300	25 x 25 x 1"	70
97844200	32 x 32 x 3/4"	45
97844300	32 x 32 x 1"	45
97844400	32 x 32 x 1-1/4"	40
97845300	40 x 40 x 1"	25
97845400	40 x 40 x 1-1/4"	25
97845500	40 x 40 x 1-1/2"	23
97846500	50 x 50 x 1-1/2"	18
97846600	50 x 50 x 2"	15
97847400	63 x 63 x 1-1/4"	9
97847500	63 x 63 x 1-1/2"	9
97847600	63 x 63 x 2"	9
97848600	75 x 75 x 2"	8
97848700	75 x 75 x 2-1/2"	8
97849800	90 x 90 x 3"	4
97840900	110 x 110 x 4"	3

### SLIP TEE

(poly x poly x poly)



SAFELOK®	SIZE	CARTON QTY
97 8032 20	20 x 20 x 20	70
97 8033 30	25 x 25 x 25	45
97 8034 40	32 x 32 x 32	25
97 8035 50	40 x 40 x 40	15
97 8036 60	50 x 50 x 50	8
97 8037 70	63 x 63 x 63	6

# SAFELOK® METRIC COMPRESSION FITTINGS

## RANGE INFORMATION

### END CONNECTOR

(poly x FI BSP)



SAFELOK®	SIZE	SIZE
97881100	16 x 1/2"	380
97881200	16 x 3/4"	380
97882100	20 x 1/2"	280
97882200	20 x 3/4"	230
97882300	20 x 1"	220
97883100	25 x 1/2"	180
97883200	25 x 3/4"	170
97883300	25 x 1"	150
97884200	32 x 3/4"	90
97884300	32 x 1"	90
97884400	32 x 1-1/4"	85
97885300	40 x 1"	55
97885400	40 x 1-1/4"	55
97885500	40 x 1-1/2"	55
97886400	50 x 1-1/4"	36
97886500	50 x 1-1/2"	36
97886600	50 x 2"	33
97887600	63 x 2"	23
97888600	75 x 2"	13
97888700	75 x 2-1/2"	13
97889600	90 x 2"	14
97889800	90 x 3"	14
97880800	110 x 3"	8
97880900	110 x 4"	8

### ELBOW 45°

(poly x poly)



SAFELOK®	SIZE	SIZE
97 8028 00	20 x 20	180
97 8038 00	25 x 25	100
97 8048 00	32 x 32	50
97 8058 00	40 x 40	29
97 8068 00	50 x 50	19
97 8078 00	63 x 63	12
97 8008 00	110 x 110	3

### ELBOW

(poly x poly)



SAFELOK®	SIZE	SIZE
97 8511 00	16 x 16	210
97 8522 00	20 x 20	150
97 8532 00	25 x 20	90
97 8533 00	25 x 25	90
97 8544 00	32 x 32	50
97 8555 00	40 x 40	26
97 8566 00	50 x 50	18
97 8577 00	63 x 63	10
97 8588 00	75 x 75	6
97 8599 00	90 x 90	3
97 8500 00	110 x 110	4

### FEMALE ELBOW

(poly x FI BSP)



SAFELOK®	SIZE	CARTON QTY
97 8611 00	16 x 1/2"	330
97 8621 00	20 x 1/2"	270
97 8622 00	20 x 3/4"	220
97 8631 00	25 x 1/2"	150
97 8632 00	25 x 3/4"	130
97 8633 00	25 x 1"	130
97 8642 00	32 x 3/4"	90
97 8643 00	32 x 1"	90
97 8644 00	32 x 1-1/4"	80
97 8653 00	40 x 1"	50
97 8654 00	40 x 1-1/4"	50
97 8655 00	40 x 1-1/2"	45
97 8665 00	50 x 1-1/2"	30
97 8666 00	50 x 2"	27
97 8675 00	63 x 1-1/2"	19
97 8676 00	63 x 2"	19
97 8686 00	75 x 2"	7
97 8687 00	75 x 2-1/2"	7
97 8688 00	75 x 3"	7
97 8698 00	90 x 3"	9
97 8609 00	110 x 4"	6

# SAFELOK® METRIC COMPRESSION FITTINGS

## RANGE INFORMATION

### MALE ELBOW

(poly x MI BSP)



SAFELOK®	SIZE	CARTON QTY
97 8721 00	20 x 1/2"	260
97 8722 00	20 x 3/4"	230
97 8731 00	25 x 1/2"	160
97 8732 00	25 x 3/4"	160
97 8733 00	25 x 1"	160
97 8743 00	32 x 1"	70
97 8744 00	32 x 1-1/4"	70
97 8753 00	40 X 1"	45
97 8754 00	40 x 1-1/4"	45
97 8755 00	40 x 1-1/2"	45
97 8765 00	50 x 1-1/2"	30
97 8776 20	63 x 2"	19
97 8788 10	75 x 3"	7

### END CAP

(poly x poly)



SAFELOK®	SIZE	CARTON QTY
97 8019 00	16	460
97 8029 00	20	280
97 8039 00	25	170
97 8049 00	32	105
97 8059 00	40	55
97 8069 00	50	40
97 8079 00	63	24
97 8089 00	75	18
97 8099 00	90	9
97 8009 00	110	4

### METRIC FLANGED ADAPTOR

(poly - flanged AS2128 Table E)



SAFELOK®	SIZE	CARTON QTY
97 8966 00	50 x 2"	9
97 8976 00	63 x 2"	5
97 8979 00	63 x 4"	5
97 8988 00	75 x 3"	5
97 8998 00	90 x 3"	4
97 8909 00	110 x 4"	2

### METRIC FLANGED ADAPTOR

(poly - flange ISO)

SAFELOK®	SIZE	CARTON QTY
97 8977 00	63 x 2"	5

### BACKING RING GALVANISED

(AS2128 Table E)



SAFELOK®	SIZE	CARTON QTY
99 8766 10	50 x 2"	-
99 8776 10	63 x 2"	-
99 8779 10	63 x 4"	-
99 8788 10	75/90 x 3"	-
99 8709 10	110 x 4"	-

### BACKING RING GALVANISED ISO

SAFELOK®	SIZE	CARTON QTY
99 8777 10	63 x 2"	-

### SHOULDERED ADAPTOR

(poly x poly)



SAFELOK®	SIZE	CARTON QTY
97 8166 20	50 x 2"	25
97 8176 20	63 x 2"	20
97 8199 10	90 x 4"	30
97 8107 10	110 x 2"	8
97 8109 10	110 x 4"	4

# Universal Transition Coupling (UTC®)



## The Swiss army knife of pipe fittings provides the ultimate connection you can trust

The Philmac UTC® (Universal Transition Coupling) is a unique range of mechanical compression fittings that provides the ultimate in pipe connection flexibility.

Without modification the same fitting connects to a variety of materials including PVC, copper, galvanised iron, ABS, lead, stainless steel and polyethylene. Each size fitting covers a range of pipe diameters providing a “Universal” solution.

### Easy disassembly

The design of the UTC® means that once the nut is backed off the pipe can easily be removed from the fitting.

### Fast and easy installation

The Philmac UTC® incorporates all the benefits of Philmac *Slide and Tighten*® technology. Simply witness mark the pipe against the flange on the body of fitting, and then insert the pipe to the correct depth. The nut can then be tightened using a wrench. The UTC® is fully installed when the nut can no longer be tightened with reasonable force.



### Complete flexibility

Through its wide sealing tolerance, the Philmac UTC® is designed to accommodate a range of different outside diameters across most pipe materials (including PVC, copper, galvanised iron, ABS, lead, stainless steel, steel and PE).

### No loose components

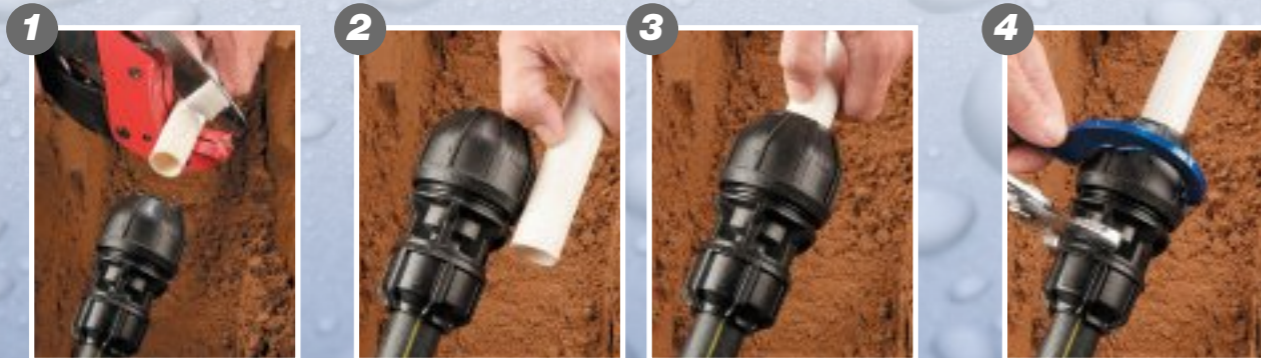
The Philmac UTC® is fully integrated with no loose components. There is no need for individual assembly of a split ring, sealing ring or nut. All that is required is the insertion of the pipe and tightening the nut.

### High Performance Materials

The Philmac UTC® is manufactured from lightweight high performance thermoplastic materials with outstanding impact, UV, chemical and corrosion resistance. The Philmac UTC® is rated to 1250 kPa to meet the needs of high pressure systems.

### Outstanding Sealing Performance

The uniquely designed oversized seal enables sealing on out of round and pitted pipes.



**1** The fitting is pre-assembled and ready to use. Cut pipe square and to length using the flange on the central body as a guide. Ensure the end of connecting pipe is undamaged and clean.

**2** To ensure adequate insertion depth, witness mark the pipe to the back of the flange.

**3** Insert the pipe to the correct depth. Always ensure the nut is backed off and 3 threads are showing. Pipes at the top end of the fitting tolerance may require 5 threads showing.

**4** Tighten nut firmly with a wrench. Nut will not butt against the body flange when the pipe size is at the top end of the fitting tolerance.

# UNIVERSAL TRANSITION COUPLINGS (UTC®)

## RANGE INFORMATION

# UNIVERSAL TRANSITION COUPLINGS (UTC®)

## RANGE INFORMATION

### JOINER (transition x poly)



UTC	SIZE	CARTON QTY
70 1032 00	15-21 x 20	100
70 1033 00	15-21 x 25	70
70 1042 00	21-27 x 20	70
70 1043 00	21-27 x 25	60
70 1052 00	27-34 x 20	50
70 1053 00	27-34 x 25	50
70 1054 00	27-34 x 32	40
70 1064 00	39-43 x 32	25
70 1074 00	34-39 x 32	30
70 1075 00	34-39 x 40	20
70 1086 00	47-49 x 50	12
70 1087 00	47-49 x 63	10
70 1097 00	59-61 x 63	10

### REPAIR COUPLING (Class C/Class D/ Copper/GI/PVC)



UTC	SIZE	CARTON QTY
97 1133 10	15-21 x 15-21	50
97 1144 10	21-27 x 21-27	40
97 1155 10	27-34 x 27-34	30
97 1166 10	39-43 x 39-43	20
97 1177 10	34-39 x 34-39	25
97 1188 10	47-49 x 47-49	15
97 1199 10	59-61 x 59-61	9

### REDUCING REPAIR COUPLING (Class C/Class D/ Copper/GI/PVC)



UTC	SIZE	CARTON QTY
97 1143 10	21-27 x 15-21	50
97 1154 10	27-34 x 21-27	35
97 1153 10	27-34 x 15-21	35
97 1150 10	34-39 x 27-34	25
97 1165 10	39-43 x 27-34	20

### ELBOW (transition x poly)



UTC	SIZE	CARTON QTY
70 1532 00	15-21 x 20	65
70 1533 00	15-21 x 25	65
70 1543 00	21-27 x 25	55
70 1544 00	21-27 x 32	35
70 1553 00	27-34 x 25	35
70 1554 00	27-34 x 32	25

### ELBOW (transition x transition) (Copper/GI/PVC)



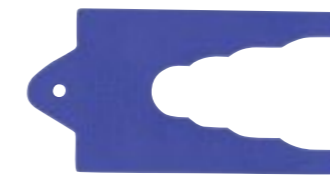
UTC	SIZE	CARTON QTY
97 0533 00	15-21 x 15-21	60
97 0544 00	21-27 x 21-27	30

### TEE (transition x transition x transition)



UTC	SIZE	CARTON QTY
97 1333 10	15-21	40

### PIPE GAUGE



SIZE	UTC
For pipe 15-34	97 1135 00

### END CONNECTOR (transition x MI BSP) (Copper/GI/PVC)



UTC	SIZE	CARTON QTY
97 1232 00	15-21 x 3/4"	120
97 1233 00	15-21 x 1"	120
97 1242 00	21-27 x 3/4"	90
97 1243 00	21-27 x 1"	85
97 1244 00	21-27 x 1 1/4"	80
97 1252 00	27-34 x 3/4"	50
97 1253 00	27-34 x 1"	50
97 1254 00	27-34 x 1 1/4"	50
97 1255 00	27-34 x 1 1/2"	45

### TEE (transition x transition x FI BSP) (Copper/GI/PVC)



UTC	SIZE	CARTON QTY
97 1432 00	15-21 x 3/4"	50
97 1433 00	15-21 x 1"	45
97 1442 00	21-27 x 3/4"	35
97 1443 00	21-27 x 1"	30

# Ball Valves

## The Ball Valve you can trust for years of reliable service

The Philmac blue handled ball valve has been servicing the rural and irrigation markets for over 30 years. The distinctive blue easy grip handle is recognised in the market as the industry standard providing users with the confidence of a strong, reliable and robust product.

Proudly made in Australia, the Philmac blue handled ball valve is based on a simple on/off action and is quick and easy to install allowing the user full control of water distribution.



### UV Stabilised

Proven performance in extreme UV conditions.

### Easy Action

The handle is not only easy to operate but has a positive on/off action through 90°. It is ergonomically designed to enable easy gripping

### Visual Indicator

When in the closed position the blue handle is at 90° to the body and when in the open position it is in line with the body clearly indicating if the valve is open or closed.

### Install in any Direction

To assist with installation Philmac ball valves can work in any direction and at any angle.

### Quality Materials

High quality injection moulded plastic bodies and components plus NBR O-rings and stainless steel screws means years of reliable operation.

### Robust Construction

Built to withstand pressures up to 1600 kPa and provide years of reliable operation.

### Approvals

All blue handled ball valves carry Standardsmark approval.



1

Apply PTFE tape or approved sealant to the male thread. Sufficient tape needs to be applied to ensure a watertight seal.



2

Screw on to a male or female thread by hand until firm.



3

Using a pipe wrench or multi-grips on the end caps only, further screw the ball valve until tight. Where necessary, ensure the thread is held stationary to avoid it from moving. Do not use pipe wrench or multi-grips on the body of the valve.



# Foot and Non-Return Valves

## The valve you can trust to keep your pumps primed

Philmac foot and non-return valves have been successfully servicing the rural and irrigation markets for more than 20 years with a reputation for quality and reliability.

Now available in a new and improved format, the new model retains all of the benefits of the previous model, but with further improvements in the lifespan of components (particularly the piston) and the flow rates of water through the valve.

Easily converted into a foot valve with the addition of a filter, the Philmac Non-Return and Foot Valve is the perfect choice for preventing back flow so pipelines do not drain and cause damage to high value equipment such as pumps.

### Low Pressure Shut-off

Designed to seal off at 20 kPa making them well suited to gravity feed systems.

### Multi-position Installation

The valves have been designed to work in either vertical or horizontal position for flexible installation.

### Piston & Seal

Redesigned piston shaft minimises the wear on the piston significantly when compared to the previous model, bringing major improvements to the lifetime of the valve. The seal remains the same proven design which allows it to reliably seal at low pressure.



Convert the Non-Return Valve to a Foot Valve by adding the easy-fit filter to protect the valve from debris.



### Flow Path

Improved flow path minimising turbulent zones.

### High Pressure Rating

Foot and non-return valves are rated to 1600 kPa (static shutoff) to meet the requirements of high pressure systems.

### Quality Materials

Manufactured from lightweight high performance thermoplastic materials which have excellent impact, UV and corrosion resistance. The material is non-toxic and taint free.



1 Apply PTFE tape or approved sealant to the male thread the non-return/foot valve is to be screwed onto. Sufficient tape needs to be applied to ensure a water tight seal.



2 Screw the valve onto male thread by hand until firm. Confirm the correct orientation of the valve by checking the water direction arrow is pointing downstream.



3 Using a pipe wrench or multi-grips on the end caps only, further screw the non-return/foot valve onto the male thread until tight. Where necessary ensure the male thread is held stationary to avoid it from moving. Do not use pipe wrench or multi-grips on the body of the non-return/foot valve.

# Ratio Pressure Reducing Valves



## Reliable and effective control of service line pressure

Philmac's ratio pressure reducing valves are designed to control service line pressure in fixed head water systems and have been doing so for over 50 years.

Their simple but effective operation means they can protect downstream pipe work, fittings and appliances from the effects of excess water pressure. With a fixed non-adjustable ratio it means the valve does not require adjusting and is tamper proof.

Ratio valves are manufactured from high grade materials to provide reliable operation and a high level of corrosion resistance. Not only are spare parts available but these valves are backed by a full maintenance service.

Philmac's range of ratio valves are designed to handle situations where reliable, controlled high pressure operation is essential.

### Serviceable

The valves have been designed to be fully serviced and repair kits containing all the seals, o-rings and instructions are readily available.

### High Flow Rates

Due to the internal design when the valve is fully open it allows full flow of water.

### High Pressure Shut off

The ratio pressure reducing valves are rated to 35 bar at 20 degrees centigrade. However they can be rated to 50 bar if required by specific application.

### Multi-position Installation

The valves have been designed to work in either vertical or horizontal position for flexible installation.

### Maintained Pressure

Under no flow conditions the downstream pressure is maintained because the valve remains closed and it will not open until the downstream pressure drops when installed in a fixed head system.

### Simple Sealing Action

Because the valve relies on only one moving part it means the valve has high reliability and shuts off when required. There are no internal ports which can become blocked or springs that can become corroded.

### Connection Flexibility

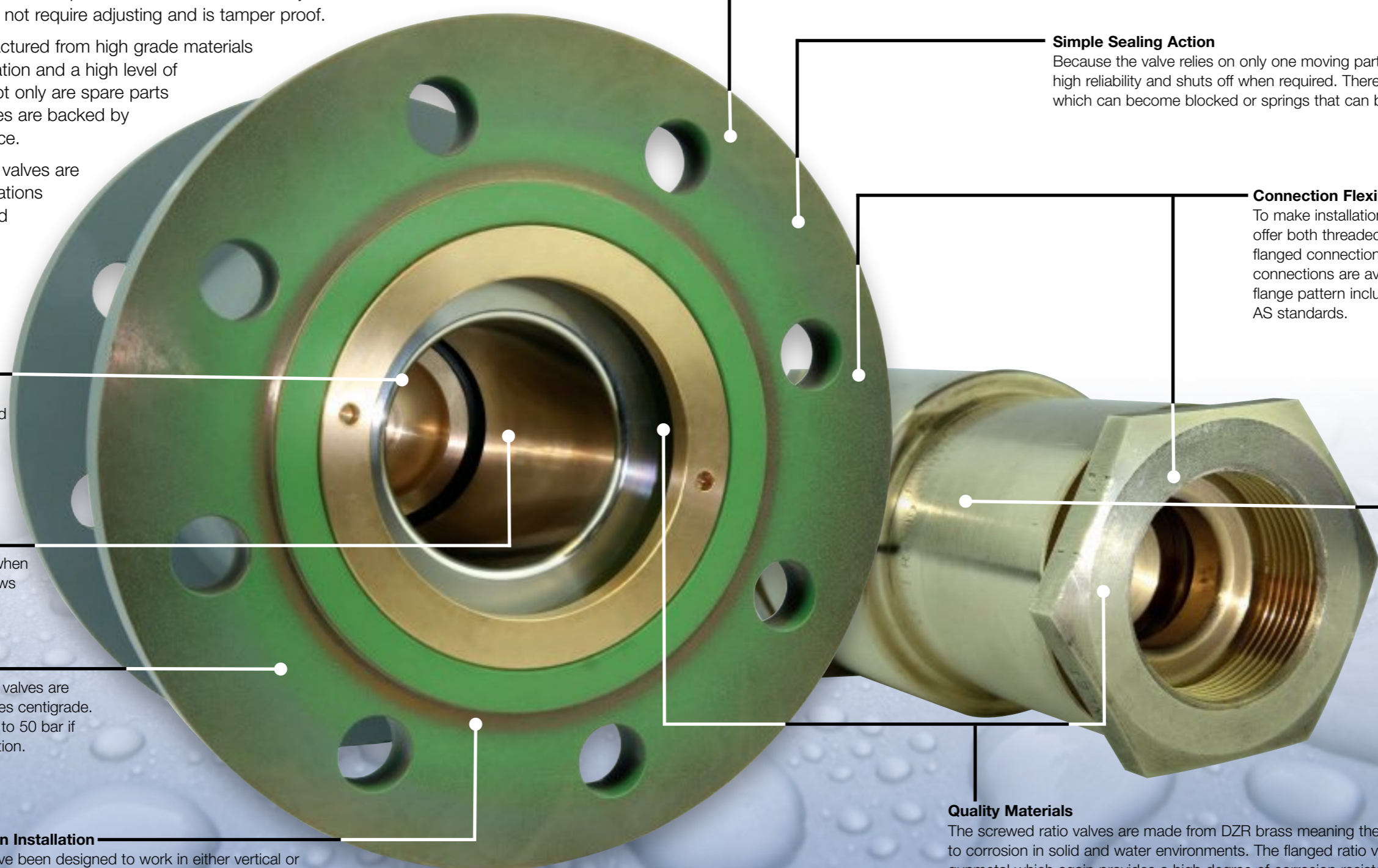
To make installation easy Philmac offer both threaded (up to 2") and flanged connections (up to 6"). Flanged connections are available in almost any flange pattern including DIN, ANSI, BS or AS standards.

### Tamperproof

There are no external regulators or pilot tubes which can be tampered with so once the valve is installed it will continue to operate at its pre set ratio.

### Quality Materials

The screwed ratio valves are made from DZR brass meaning the valves have a high resistance to corrosion in solid and water environments. The flanged ratio valves are manufactured from gunmetal which again provides a high degree of corrosion resistance and strength. Please note different materials can be used if specific application requirements require it.





# BALL, FOOT & NON RETURN VALVES

## RANGE INFORMATION

# RATIO VALVES

## RANGE INFORMATION

### BALL VALVE

(poly x poly)



VALVES	SIZE	CARTON QTY
95 5001 00	1/2"	80
95 5002 00	3/4"	70
95 5003 00	1"	60
95 5004 00	1 1/4"	35
95 5005 00	1 1/2"	26
95 5006 00	2"	20

### BALL VALVE

(poly x poly)



VALVES	SIZE	CARTON QTY
98 5102 00	3/4"	70
98 5103 00	1"	60
98 5105 00	1 1/2"	26
98 5106 00	2"	20

### BALL VALVE

(poly x poly)



VALVES	SIZE	CARTON QTY
95 5101 00	1/2"	80
95 5102 00	3/4"	70
95 5103 00	1"	55
95 5104 00	1 1/4"	30
95 5105 00	1 1/2"	22
95 5106 00	2"	16

### FOOT VALVE

(poly x poly)



VALVES	SIZE	CARTON QTY
95 5012 00	3/4"	65
95 5013 00	1"	45
95 5014 00	1 1/4"	35
95 5015 00	1 1/2"	20
95 5016 00	2"	12

### NON RETURN VALVE

(poly x poly)



VALVES	SIZE	SIZE
95 5022 00	3/4"	85
95 5023 00	1"	60
95 5024 00	1 1/4"	40
95 5025 00	1 1/2"	30
95 5026 00	2"	16

### SCREWED SERIES RATIO VALVES

(BSP x BSP)



SIZE	RATIO	VALVES
15 (1/2")	2:1	90 2221 00
15 (1/2")	3:1	90 2231 00
20 (3/4")	2:1	90 2222 00
20 (3/4")	3:1	90 2232 00
25 (1")	2:1	90 2223 00
25 (1")	3:1	90 2233 00
40 (1 1/2")	2:1	90 2225 00
40 (1 1/2")	3:1	90 2235 00
50 (2")	2:1	90 2226 00
50 (2")	3:1	90 2236 00

### FLANGED SERIES RATIO VALVES

(Flange x Flange)



SIZE	FLANGE SIZE	RATIO	VALVES
50	50 (2")	2:1	90 2601 00
50	50 (2")	3:1	90 2602 00
50	50 (2")	4:1	90 2603 00
50	50 (2")	5:1	90 2604 00
50	65 (2 1/2")	2:1	90 2605 00
50	65 (2 1/2")	3:1	90 2606 00
50	65 (2 1/2")	4:1	90 2607 00
50	65 (2 1/2")	5:1	90 2608 00
50	80 (3")	1.5:1	90 2617 00
50	80 (3")	2:1	90 2609 00
50	80 (3")	3:1	90 2610 00
50	80 (3")	4:1	90 2611 00
50	80 (3")	5:1	90 2612 00
80	80 (3")	1.5:1	90 2639 00
80	80 (3")	2:1	90 2626 00
80	80 (3")	3:1	90 2627 00
80	80 (3")	4:1	90 2628 00
80	80 (3")	5:1	90 2629 00
80	100 (4")	1.5:1	90 2634 00
80	100 (4")	2:1	90 2630 00
80	100 (4")	3:1	90 2631 00
80	100 (4")	4:1	90 2632 00
80	100 (4")	5:1	90 2633 00
100	100 (4")	1.5:1	90 2660 00
100	100 (4")	2:1	90 2651 00
100	100 (4")	3:1	90 2652 00
100	100 (4")	4:1	90 2653 00
100	100 (4")	5:1	90 2654 00
100	150 (6")	1.5:1	90 2665 00
100	150 (6")	2:1	90 2655 00
100	150 (6")	3:1	90 2656 00
100	150 (6")	4:1	90 2657 00
100	150 (6")	5:1	90 2658 00
150	150 (6")	2:1	90 2676 00
150	150 (6")	3:1	90 2677 00
150	150 (6")	4:1	90 2678 00

# BSP Threaded Fittings

## Versatile threaded solutions you can trust

Philmac's robust threaded fittings provide precision BSP tapered threads that have been engineered to maximize sealing performance.

The versatile range is made from high performance, UV resistant polypropylene that prevents moisture absorption, ensuring installation is quick, simple and reliable every time.

Philmac's threaded fittings provide maximum versatility, delivering a high performance connection across a wide range of pressure ratings and chemical combinations. The hexagonal body makes them extremely simple to install.

Importantly, Philmac threaded fittings are suitable for working pressures up to PN16 (1600kPa, 235psi) for sizes up to 2", PN12 (1200kPa, 175psi) for 2-1/2" and PN10 (1000kPa, 145psi) for 3" and 4" sized fittings. The comprehensive range includes plugs, bushes, nipples, sockets, tees, elbows, tank outlets, MF elbows and caps.



### Quality Materials

Philmac threaded fittings are manufactured for high quality materials that ensure strength of joint over many years. The material also has a high degree of UV resistance to ensure long term performance even in direct sunlight.

### Reliable, high quality threads

Philmac threaded fittings are manufactured in accordance to the company's ISO9001 quality endorsed standard. When using a Philmac BSP threaded fitting you can be sure thread is to standard and will work every time.

### Hexagonal Design

Smart hexagonal design makes the fittings compatible with tools and ensures that Philmac BSP threaded fittings are extremely easy to install.

### Wide Range

Philmac threaded fittings are available in sizes up to 4" and also in the full range of configurations to ensure Philmac have the correct fittings for your application requirements.



# BSP THREADED FITTINGS

## RANGE INFORMATION

# BSP THREADED FITTINGS

## RANGE INFORMATION

### PLUGS - Small Bore (poly)



BSP THREADED	SIZE	CARTON QTY
RXHP06	1/8"	-
RXHP08	1/4"	-
RXHP10	3/8"	-

### BUSHES - Small Bore (poly)



BSP THREADED	SIZE	CARTON QTY
RXRB0806	1/4" x 1/8"	-
RXRB1006	3/8" x 1/8"	-
RXRB1008	3/8" x 1/4"	-
RXRB1506	1/2" x 1/8"	-
RXRB1508	1/2" x 1/4"	-
RXRB1510	1/2" x 3/8"	-
RXRB2008	3/4" x 1/4"	-
RXRB2010	3/4" x 3/8"	-

### NIPPLES - Small Bore (poly)



BSP THREADED	SIZE	CARTON QTY
RXHN06	1/8"	-
RXRHN0806	1/4" x 1/8"	-
RXHN08	1/4"	-
RXRHN1006	3/8" x 1/8"	-
RXRHN1008	3/8" x 1/4"	-
RXHN10	3/8"	-
RXRHN1508	1/2" x 1/4"	-
RXRHN1510	1/2" x 3/8"	-

### SOCKETS - Small Bore (poly)



BSP THREADED	SIZE	CARTON QTY
RXHS06	1/8"	-
RXRHS0806	1/4" x 1/8"	-
RXHS08	1/4"	-
RXRHS1006	3/8" x 1/8"	-
RXRHS1008	3/8" x 1/4"	-
RXHS10	3/8"	-
RXRHS1508	1/2" x 1/4"	-
RXRHS1510	1/2" x 3/8"	-

### PLUGS (poly)



BSP THREADED	SIZE	CARTON QTY
90 4011 00	1/2"	1100
90 4022 00	3/4"	600
90 4033 00	1"	400
90 4044 00	1 1/4"	240
90 4055 00	1 1/2"	180
90 4066 00	2"	100

### BUSHES (poly)



BSP THREADED	SIZE	CARTON QTY
90 4121 00	3/4" x 1/2"	700
90 4130 00	1" x 1/4"	-
90 4131 00	1" x 1/2"	380
90 4132 00	1 x 3/4"	380
90 4141 00	1 1/4" x 1/2"	240
90 4142 00	1 1/4" x 3/4"	240
90 4143 00	1 1/4" x 1"	240
90 4151 00	1 1/2" x 1/2"	180
90 4152 00	1 1/2" x 3/4"	180
90 4153 00	1 1/2" x 1"	180
90 4154 00	1 1/2" x 1 1/4"	180
90 4161 00	2" x 1/2"	100
90 4162 00	2" x 3/4"	100
90 4163 00	2" x 1"	100
90 4164 00	2" x 1 1/4"	100
90 4165 00	2" x 1 1/2"	100
90 4186 00	3" x 2"	100
90 4187 00	3" x 2 1/2"	100
90 4106 00	4" x 2"	50
90 4108 00	4" x 3"	50

### NIPPLES (poly)



BSP THREADED	SIZE	CARTON QTY
90 4211 00	1/2"	700
90 4221 00	3/4" x 1/2"	480
90 4222 00	3/4"	420
90 4231 00	1" x 1/2"	340
90 4232 00	1" x 3/4"	260
90 4233 00	1"	260
90 4241 00	1 1/4" x 1/2"	180
90 4242 00	1 1/4" x 3/4"	170
90 4243 00	1 1/4" x 1"	160
90 4244 00	1 1/4"	150
90 4251 00	1 1/2" x 1/2"	140
90 4252 00	1 1/2" x 3/4"	140
90 4253 00	1 1/2" x 1"	140
90 4254 00	1 1/2" x 1 1/4"	110
90 4255 00	1 1/2"	100
90 4261 00	2" x 1/2"	90
90 4262 00	2" x 3/4"	90
90 4263 00	2" x 1"	90
90 4264 00	2" x 1 1/4"	80
90 4265 00	2" x 1 1/2"	80
90 4266 00	2"	60
90 4277 00	2 1/2"	90
90 4286 00	3" x 2"	70
90 4287 00	3" x 2 1/2"	70
90 4288 00	3"	65
90 4208 00	4" x 3"	50
90 4200 00	4"	35

### SOCKETS (poly)



BSP THREADED	SIZE	CARTON QTY
90 4311 00	1/2"	380
RXRHS2008	3/4" x 1/4"	-
90 4321 00	3/4" x 1/2"	280
90 4322 00	3/4"	280
90 4331 00	1" x 1/2"	180
90 4332 00	1" x 3/4"	180
90 4333 00	1"	180
90 4342 00	1 1/4" x 3/4"	120
90 4343 00	1 1/4" x 1"	110
90 4344 00	1 1/4"	110
90 4352 00	1 1/2" x 3/4"	100
90 4353 00	1 1/2" x 1"	100
90 4354 00	1 1/2" x 1 1/4"	90
90 4355 00	1 1/2"	90

# BSP THREADED FITTINGS

## RANGE INFORMATION

### TEES FI (poly)



BSP THREADED	SIZE	CARTON QTY
90 4511 00	1/2"	210
90 4522 00	3/4"	120
90 4533 00	1"	80
90 4544 00	1 1/4"	40
90 4555 00	1 1/2"	30
90 4566 00	2"	21

### ELBOWS MI x FI (poly)



BSP THREADED	SIZE	CARTON QTY
90 4691 00	1/2"	420
90 4692 00	3/4"	220
90 4693 00	1"	130
90 4694 00	1 1/4"	75
90 4695 00	1 1/2"	50
90 4696 00	2"	30

### CAPS - Small Bore (poly)



BSP THREADED	SIZE	CARTON QTY
RXCP06	1/8"	-
RXCP08	1/4"	-
RXCP10	3/8"	-

### CAPS (poly)



BSP THREADED	SIZE	CARTON QTY
90 4901 00	1/2"	640
90 4902 00	3/4"	500
90 4903 00	1"	320
90 4904 00	1 1/4"	180
90 4905 00	1 1/2"	130
90 4906 00	2"	80

### ELBOWS FI (poly)



BSP THREADED	SIZE	CARTON QTY
90 4611 00	1/2"	300
90 4622 00	3/4"	180
90 4633 00	1"	120
90 4644 00	1 1/4"	70
90 4655 00	1 1/2"	50
90 4666 00	2"	30

### ELBOWS MI x MI (poly)



BSP THREADED	SIZE	CARTON QTY
RXTME06	1/8"	-
RXTME08	1/4"	-
RXTME10	3/8"	-

# BSP THREADED FITTINGS

## RANGE INFORMATION

# Micro Irrigation

## STAKES

Stakes are used to provide a stable platform to attach a sprinkler or jet. They also provide some elevation above the plants and provide a more efficient irrigation. Stakes are available with heads for micro sprinklers or jets while some allow flexible tubing or rigid risers to be attached to them.

## JETS – Fixed Flow (up to 100 L/h)

Jets provide a fan or multi-stream pattern up to a 2 metre radius. Available with a variety of arcs including 90°, 180° and 360°. Recommended for the irrigation of vegetables, garden beds, nurseries etc. Ideal where fixed flow rates are required at specified pressure.

## JETS – Adjustable Flow (0 - 80 L/h)

These feature an adjustable knob or cap which allows the flow and diameter to be varied. Used in residential gardens, flower beds, ground covers, shrubs and trees, the adjustable precipitation rates are ideal for areas where water control is required.

## MINI SPRINKLERS (up to 300 L/h)

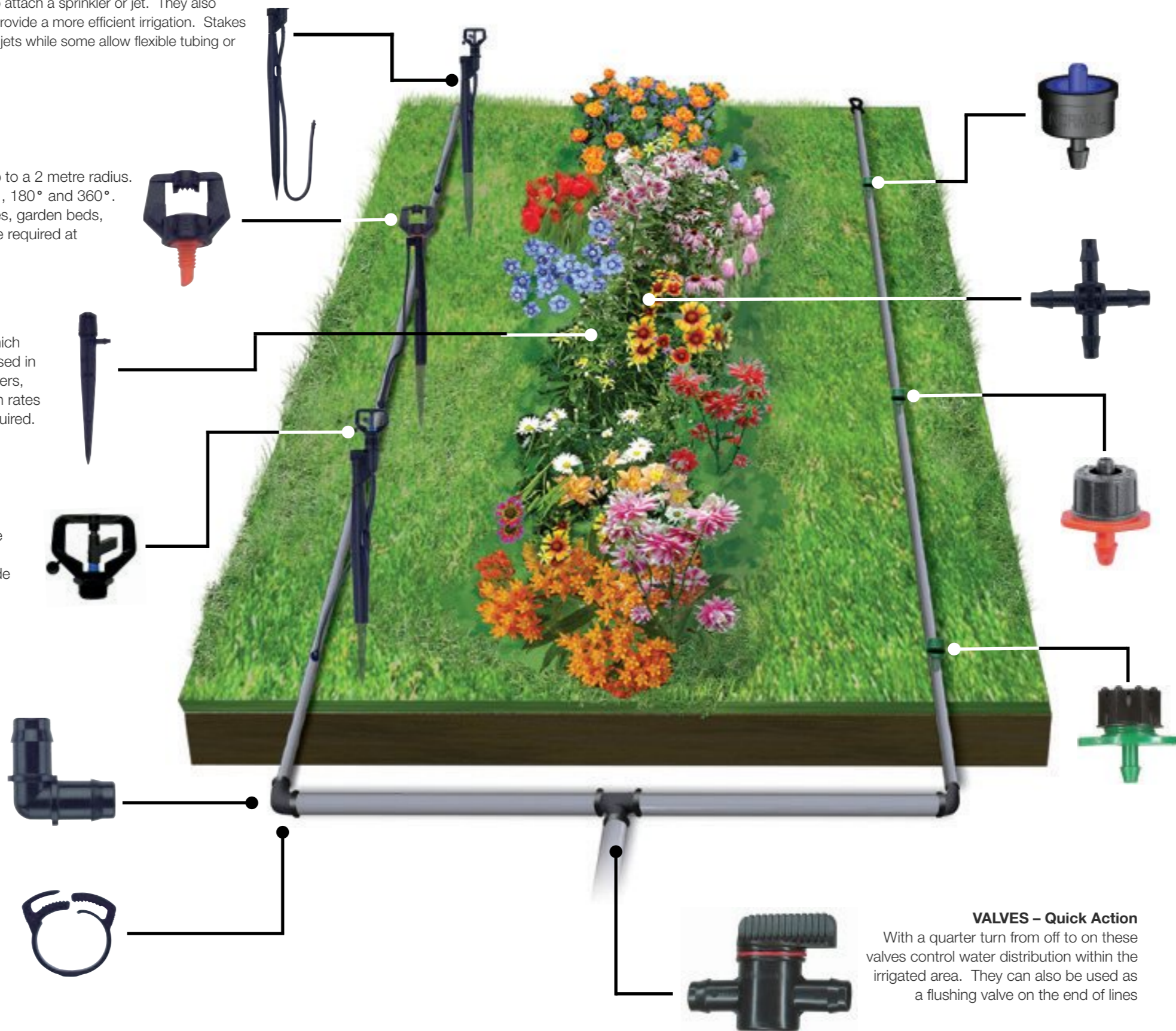
Provide larger diameter throws up to 6 metre radius. Used in orchards, vegetables and gardening as well as green-houses and shade houses. Also recommended for cooling in agriculture systems. Available in anti-insect system.

## STATIC FITTINGS

These fittings are used to connect LDPE pipe from 10 to 32 mm in diameter. The sharp barbs bite into the pipe to retain the pipe on the fitting.

## RATCHET OR TUBE CLIPS

These hold the pipe tightly onto the shank of the static fitting and assist in preventing the pipe from pulling off under pressure.



## DRIPPERS – Fixed Flow (up to 8 L/h)

A turbulent flow path dripper sealed to maintain pre-set discharge rates and uniformity. Recommend for gardens and flatter agricultural areas.

## MICRO FITTINGS

Typically manufactured in sizes smaller than 10 mm they are used to join flexible PVC and LDPE tubing. Small micro-valves are also available to suit some sizes.

## DRIPPERS – Fixed Flow Pressure Compensating (up to 8 L/h)

The pressure compensating drippers provide each plant with a constant discharge independent of the pressure. It is an ideal dripper for crops that require precision irrigation. Ideally suited to areas with variable topography or long runs.

## DRIPPERS – Adjustable Flow (0 - 40 L/h)

These feature an adjustable cap which allows the flow to be varied. Used in residential gardens, flower beds, ground covers, shrubs and trees, the adjustable precipitation rates are ideal for areas where.

## VALVES – Quick Action

With a quarter turn from off to on these valves control water distribution within the irrigated area. They can also be used as a flushing valve on the end of lines

# MICRO IRRIGATION

Spray Jets - Fixed Flow-rate

## RANGE INFORMATION

# MICRO IRRIGATION

Spray Jets - Fixed Flow-rate

## RANGE INFORMATION

### XL-JET+ GARDEN SERIES

"Stream & Feather Pattern"



MICRO IRRIGATION	SIZE	BAG QTY
SF3617	360° Stream & feather pattern 140 L/h orange nozzle	100
SF1812	180° Stream & feather pattern 70 L/h green nozzle	100
SF9009	90° Stream & feather pattern 35 L/h black nozzle	100

### XL-JET+ STRIP SPRAYS

(Bowtie Pattern)



MICRO IRRIGATION	SIZE	BAG QTY
SXL12	Strip Spray 3.2 m radius x 1.1 m wide 70 L/h green nozzle	100
SXL14	Strip Spray 3.7 m radius x 1.1 m wide 90 L/h red nozzle	100

### ONE PIECE

Full circle and part-circle  
- 4mm Threaded inlet



MICRO IRRIGATION	SIZE	BAG QTY
JSF12	360° Green - 1.2 mm Jet; 1.2 m radius & 55 L/h @ 100 kPa	100
JSH12	180° Green - 1.2 mm Jet; 1.2 m radius & 55 L/h @ 100 kPa	100
JSQ12	90° Green - 1.2 mm Jet; 1.2 m radius & 55 L/h @ 100 kPa	100
JSF16	360° Black - 1.6 mm Jet; 1.5 m radius & 90 L/h @ 100 kPa	100
JSH16	180° Black - 1.6 mm Jet; 1.5 m radius & 90 L/h @ 100 kPa	100
JSQ16	90° Black - 1.6 mm Jet; 1.6 m radius & 90 L/h @ 100 kPa	100

### TWO PIECE

- Base & Cap

Full circle and  
Part-circle  
- 4mm Threaded  
inlet



MICRO IRRIGATION	SIZE	BAG QTY
M36018	360° 18 Hole Cap - 1.3 mm nozzle; 2.8 m radius & 60 L/h @ 100 kPa (green base)	100
M36015	360° 15 Hole Cap - 1.3 mm nozzle; 2.9 m radius & 54 L/h @ 100 kPa (green base)	100
M36012	360° 12 Hole Cap - 1.3 mm nozzle; 2.5 m radius & 54 L/h @ 100 kPa (green base)	100
M270	270° Cap - 1.3 mm nozzle; 1.7 m radius & 54 L/h @ 100 kPa (green base)	100
M180	180° Cap - 1.3 mm nozzle; 2.0 m radius & 60 L/h @ 100 kPa (green base)	100
M90	90° Cap - 1.3 mm nozzle; 2.2 m radius & 60 L/h @ 100 kPa (green base)	100

### XL-JET+ HORTICULTURE SERIES

"Spaced Streams"



MICRO IRRIGATION	SIZE	BAG QTY
S361609	360° x 16 Streams 35 L/h black nozzle	100
S361610	360° x 16 Streams 45 L/h blue nozzle	100
S361612	360° x 16 Streams 70 L/h green nozzle	100
S361614	360° x 16 Streams 90 L/h red nozzle	100
S361617	360° x 16 Streams 140 L/h orange nozzle	100

Only available in 360° pattern - 16 strong water streams - from 35 Litres per hour to 140 Litres per hour

### XL-JET + MISTER



MICRO IRRIGATION	SIZE	BAG QTY
MXL09	Green House Mister 35 L/h black nozzle	100

### HOLE PUNCH



MICRO IRRIGATION	SIZE	BAG QTY
PK4	Punch Spanner for 1 & 2 piece jets	25

### STRIP SPRAY

(Bowtie pattern) - 90 Lph,  
4mm Threaded inlet



MICRO IRRIGATION	SIZE	BAG QTY
DV16/T	Strip Spray - Blue - 1.6 mm Jet, 1.9 m radius x 1.4 m max width (narrow vine spray jet)	100

### STRIP

33 Lph,  
4mm Threaded inlet



MICRO IRRIGATION	SIZE	BAG QTY
M220	Bowtie pattern - 2 x 20° strips, 2.9 m radius, (blue base)	100

### STRIP SPRAY

18 Lph,  
4mm Threaded inlet



MICRO IRRIGATION	SIZE	BAG QTY
M220	Mister - 0.4 m radius, (yellow base)	100

Flow rates and radius of throw rated at 100 kPa

# MICRO IRRIGATION

Spray Jets - Adjustable Flow-rate

## RANGE INFORMATION

# MICRO IRRIGATION

Drippers - Fixed Flow-rate

## RANGE INFORMATION

**VARIJET™**  
4 mm Threaded  
inlet adjustable  
flow rate spray



MICRO IRRIGATION	SIZE	BAG QTY
VJ360	VariJet - 360° - Spray 0-2.9 m radius & 0-77 L/h @ 100 kPa	50
VJ180	VariJet - 180° - Spray 0-2.5 m radius & 0-77 L/h @ 100 kPa	50
VJ90	VariJet - 90° - Spray 0-2.1 m radius & 0-77 L/h @ 100 kPa	50

**VORTEX**  
4 mm inlet



MICRO IRRIGATION	SIZE	BAG QTY
VS360T	Vortex 360° Spray - threaded 0-0.85 m radius & 0-52 L/h @ 100 kPa	50
VS360B	Vortex 360° Spray - barbed 0-0.85 m radius & 0-52 L/h @ 100 kPa	50

**Spike with 4 inlet**



MICRO IRRIGATION	SIZE	BAG QTY
VS360S	Vortex 360° Spike Spray 0-0.85 m radius & 0-52 L/h @ 100 kPa	25

**OCTA-MITTA PC8 OUTLET**  
High Discharge



MICRO IRRIGATION	SIZE	BAG QTY
MXL09	Ottima™ PC 360° End Line Spike 0.36 m diameter & 40 L/h	25

**Pressure Compensated (PC) Spray Jets**

**VORTEX PC SPRAY JET**



MICRO IRRIGATION	SIZE	BAG QTY
VS360SPC	Vortex PC 360° End Line Spike 1.9 m diameter & 50 L/h	25

**TWO PIECE PC SPRAY JET - BASE & CAP**  
Full circle and part-circle - 4 mm Threaded inlet



MICRO IRRIGATION	SIZE	BAG QTY
M36018PC	360° 18 Hole Cap - 1.3 mm nozzle; 1.3 m diameter & 80 L/h PC	50
M180PC	180° Cap - 1.3 mm nozzle; 1.9 m radius & 40 L/h PC	50
M90PC	90° Cap - 1.3 mm nozzle; 1.8 m radius & 20 L/h	50

**KEY DRIPPERS**  
Two Piece



MICRO IRRIGATION	SIZE	BAG QTY
CD4	Chevron Turbo Path 4 L/h @ 100 kPa - two piece cleanable, 4 mm barb inlet (Black Key)	100
CD8	Chevron Turbo Path 8 L/h @ 100 kPa - two piece cleanable, 4 mm barb inlet (Green Key)	100

**CETA®**  
Pressure Compensated



MICRO IRRIGATION	SIZE	BAG QTY
CETA2PC	CETA® Pressure Compensating 2 L/h - 4 mm barb, Red base	100
CETA4PC	CETA® Pressure Compensating 4 L/h - 4 mm barb, Black base	100
CETA8PC	CETA® Pressure Compensating 8 L/h - 4 mm barb, Green base	100

**CETA® ON A SPIKE**  
Pressure Compensated



MICRO IRRIGATION	SIZE	BAG QTY
CETA4SPIKE	CETA® Pressure Compensated 4 L/h - Spike - 4 mm side entry barb	25

**CETA® ON AN IN-LINE SPIKE**  
Pressure Compensated



MICRO IRRIGATION	SIZE	BAG QTY
CETA4ILSPIKE	CETA® Pressure Compensated 4 L/h - Spike - 4 mm side entry/outlet barbs	25

**Drippers - Fixed Flow-rate - sealed**

**TRUE DRIP Normal**



MICRO IRRIGATION	SIZE	BAG QTY
TD2	True Drip Turbo Flow, 2 L/h - sealed - 4 mm barbed inlet	100
TD4	True Drip Turbo Flow, 4 L/h - sealed - 4 mm barbed inlet	100
TD8	True Drip Turbo Flow, 8 L/h - sealed - 4 mm barbed inlet	100

**TRUE DRIP Pressure Compensated Drip Stop (PC-DS)**



MICRO IRRIGATION	SIZE	BAG QTY
TD2PC	360° 18 Hole Cap - 1.3 mm nozzle; 2.8 m radius & 60 L/h @ 100 kPa (green base)	100
TD4PC	360° 15 Hole Cap - 1.3 mm nozzle; 2.9 m radius & 54 L/h @ 100 kPa (green base)	100
TD8PC	360° 12 Hole Cap - 1.3 mm nozzle; 2.5 m radius & 54 L/h @ 100 kPa (green base)	100

Flow rates at 100 kPa

# MICRO IRRIGATION

Drippers - Adjustable Flow-rate

## RANGE INFORMATION

# MICRO IRRIGATION

Stakes and Heads

## RANGE INFORMATION

### 4mm OCTA-MITTER

4 Outlet High Discharge (for thirsty plants)



MICRO IRRIGATION	SIZE	BAG QTY
OCTA-8	Octa-mitter, 8 port, 4 mm Threaded inlet with black base, Flow Rate 0 - 40 L/h	100
OCTA-8B	Octa-mitter, 8 port, 4 mm Barbed inlet with black base, Flow Rate 0 - 40 L/h @ 100 kPa	100

### Micro Sprinklers - Anti Insect

#### ORBITOR

Head only, 3/8" BSP Base (3/8" To suit Threaded stake heads)



MICRO IRRIGATION	SIZE	BAG QTY
OAA13	White nozzle 55 L/h - 2.3 m radius @150 kPa	50
OAA14	Maroon nozzle 70 L/h - 2.3 m radius @150 kPa	50
OAA16	Green nozzle 90 L/h - 2.4 m radius @150 kPa	50
OAA20	Blue nozzle 120 L/h - 2.4 m radius @150 kPa	50
OAA22	Grey nozzle 150 L/h - 2.6 m radius @150 kPa	50
OAA24	Yellow nozzle 185 L/h - 3.1 m radius @150 kPa	50
OAA27	Red nozzle 240 L/h - 3.4 m radius @150 kPa	50

### Micro Sprinklers

#### CHALLENGER

Head only, 3/8" BSP Base (3/8" To suit BSPF Threaded stake heads)



MICRO IRRIGATION	SIZE	BAG QTY
SMB13	Head White Nozzle - 55 L/h 3.5 m radius	50
SMB14	Head Maroon Nozzle - 70 L/h 3.7 m radius	50
SMB16	Head Green Nozzle - 90 L/h 4.3 m radius	50
SMB20	Head Blue Nozzle - 120 L/h 4.6 m radius	50
SMB22	Head Grey Nozzle - 150 L/h 5.0 m radius	50
SMB24	Head Yellow Nozzle - 185 L/h 5.4 m radius	50
SMB25	Head Olive Nozzle - 200 L/h 5.5 m radius	50
SMB27	Head Red Nozzle - 240 L/h 5.5 m radius	50

#### CHALLENGER

HEAD ONLY, 1/2" BSP BASE



MICRO IRRIGATION	SIZE	BAG QTY
SMB13/12	Head White Nozzle - 55 L/h 3.5 m radius	50
SMB16/12	Head Green Nozzle - 90 L/h 4.3 m radius	50
SMB20/12	Head Blue Nozzle - 120 L/h 4.6 m radius	50
SMB22/12	Head Grey Nozzle - 150 L/h 5.0 m radius	50
SMB24/12	Head Yellow Nozzle - 185 L/h 5.4 m radius	50
SMB25/12	Head Olive Nozzle - 200 L/h 5.5 m radius	50
SMB27/12	Head Red Nozzle - 240 L/h 5.5 m radius	50

Flow rates and radius of throw rated at 150 kPa

### STAKE TO SECURE

4 mm Tube vertically

MICRO IRRIGATION	SIZE	BAG QTY
DWS	Jet Stake - 310 mm long. Designed to secure 4 mm tube vertically complete with emitter	10

### STAKE WITH TOP SPIKE

(For fitting separate head)

MICRO IRRIGATION	SIZE	BAG QTY
STO	Combi-Stake - 340 mm long (suits HD4, HD5, HD10S head)	50

### STAKE TO SECURE POLY TUBE

Horizontally

MICRO IRRIGATION	SIZE	BAG QTY
PS12	Snap on pipe stake to secure 13 mm poly-tube	25
PS34	Snap on pipe stake to secure 19 mm poly-tube	25

### HEADS TO SUIT

Combi-Stake (STO)



MICRO IRRIGATION	SIZE	BAG QTY
HD4	4 mm poly-tube barb bottom entry. Top outlet, 4 mm hole to accept 4 mm threaded sprays	50
HD5	5 mm poly-tube barb, bottom entry. Top outlet, 3/8" female internal thread and 1/2" male external thread	100
HD10S	10 mm poly-tube barb, swivel entry. Top outlet, 3/8" female internal thread and 1/2" male external thread	100

### HEADS TO SUIT

5 mm OD Steel rod stakes



MICRO IRRIGATION	SIZE	BAG QTY
ARS105	Rod Stake Adaptor. 5 mm poly-tube barb, bottom entry. Top outlet - 3/8" female internal thread	100

### HEADS TO SUIT

26.7 mm OD PVC Pipe stakes



MICRO IRRIGATION	SIZE	BAG QTY
CPS1010	Collar Pipe Stake. 10 mm poly-tube barb inlet, bottom entry. Top outlet 3/8" Female thread	100
CPS1013	Collar Pipe Stake. 13 mm poly-tube barb inlet, bottom entry. Top outlet 3/8" Female thread	100

COMBINATION STAKE AND HEAD (no tube or barbed take-off fittings)



MICRO IRRIGATION	SIZE	CARTON QTY
STO5	Combi Stake 340 mm (STO) plus head (HD5). 5 mm bottom entry barbed inlet. Dual threaded outlet with 3/8" female thread and 1/2" male thread	250
ST10	One piece unit incorporating stake and integrated head. 10 mm side-entry barbed inlet. Dual threaded outlet with 3/8" female thread and 1/2" male thread	220
ST10S	Combi-Stake 340 mm (STO) plus head with swivel elbow. 10 mm barbed inlet. Dual threaded outlet with 3/8" female thread and 1/2" male thread	240

ASSEMBLED STAKES (stake, head, tube and barb-fitting)



MICRO IRRIGATION	SIZE	BAG QTY
LST4A	HD4A head assembly complete with STO stake	25
STO5A	HD5A head assembly complete with STO stake	25



# MICRO IRRIGATION

Static Fittings for LDPE Pipe

## RANGE INFORMATION

# MICRO IRRIGATION

Static Fittings for LDPE Pipe

## RANGE INFORMATION

### JOINERS

Barbed



MICRO IRRIGATION	SIZE	BAG QTY
14HJ	Joiner 6 mm	100
38HJ	Joiner 10 mm	25
12HJ	Joiner 13 mm	25
58HJ	Joiner 16 mm	25
34HJ	Joiner 19 mm	25
10HJ	Joiner 25 mm	25
114HJ	Joiner 32 mm	10
L10HJ	Joiner 25 mm Long	25

### JOINER

Reducing Barbed



MICRO IRRIGATION	SIZE	BAG QTY
RJ5612	Reducing joiner 8 mm x 13 mm	25
RJ3814	Reducing joiner 10 mm x 6 mm	25
RJ1214	Reducing joiner 13 mm x 6 mm	25
RJ1238	Reducing joiner 13 mm x 10 mm	25
RJ5812	Reducing joiner 16 mm x 13 mm	25
RJ3412	Reducing joiner 19 mm x 13 mm	25
RJ3458	Reducing joiner 19 mm x 16 mm	25
RJ1012	Reducing joiner 25 mm x 13 mm	25
RJ1034	Reducing joiner 25 mm x 19 mm	25
RJ11410	Reducing joiner 32 mm x 25 mm	25

### TEES

Barbed



MICRO IRRIGATION	SIZE	BAG QTY
T14	Tee Joiner, 6 mm	100
T38	Tee Joiner, 10 mm	25
T12	Tee Joiner, 13 mm	25
T58	Tee Joiner, 16 mm	25
T34	Tee Joiner, 19 mm	25
T10	Tee Joiner, 25 mm	25
T114	Tee Joiner, 32 mm	25

### TEES

Reducing Barbed



MICRO IRRIGATION	SIZE	BAG QTY
1214RT	13 mm line x 6 mm branch	25
1238RT	13 mm line x 10 mm branch	25
5812RT	16 mm line x 13 mm branch	25
3412RT	19 mm line x 13 mm branch	25
3458RT	19 mm line x 16 mm branch	25
1012RT	25 mm line x 13 mm branch	25
1058RT	25 mm line x 16 mm branch	25
1034RT	25 mm line x 19 mm branch	25
11412RT	32 mm line x 13 mm branch	25
11434RT	32 mm line x 19 mm branch	25
11410RT	32 mm line x 25 mm branch	25

### TEES

Increasing Barbed



MICRO IRRIGATION	SIZE	BAG QTY
IT1258	13 mm line x 16 mm branch	25
IT1234	13 mm line x 19 mm branch	25
IT5834	16 mm line x 19 mm branch	25
IT3410	19 mm line x 25 mm branch	25

### TEES

Threaded Female



MICRO IRRIGATION	SIZE	BAG QTY
T12G14F	13 mm line x 1/4" BSP female branch	25
T12G12F	13 mm line x 1/2" BSP female branch	25
T34G12F	19 mm line x 1/2" BSP female branch	25
T10G12F	25 mm line x 1/2" BSP female branch	25

### TEES

Threaded Male



MICRO IRRIGATION	SIZE	BAG QTY
T12G12M	13 mm line x 1/2" BSP male branch	25
T34G12M	19 mm line x 1/2" BSP male branch	25
T3434M	19 mm line x 3/4" BSP male branch	25
T10G12M	25 mm line x 1/2" BSP male branch	25
T10G34M	25 mm line x 3/4" BSP male branch	25
T114G12M	32 mm line x 1/2" BSP male branch	25

### ELBOWS

Barbed



MICRO IRRIGATION	SIZE	BAG QTY
E14	90° Elbow 6 mm	100
E38	90° Elbow 10 mm	25
E12	90° Elbow 13 mm	25
E58	90° Elbow 16 mm	25
E34	90° Elbow 19 mm	25
E10	90° Elbow 25 mm	25
E114	90° Elbow 32 mm	25

### ELBOWS

Threaded Female



MICRO IRRIGATION	SIZE	BAG QTY
E12G12F	13 mm x 1/2" BSP female 90° elbow	25
E34G12F	19 mm x 1/2" BSP female 90° elbow	25
E10G12F	25 mm x 1/2" BSP female 90° elbow	25

### ELBOWS

Threaded Male



MICRO IRRIGATION	SIZE	BAG QTY
E12G12M	13 mm x 1/2" BSP male 90° elbow	25
E34G12M	19 mm x 1/2" BSP male 90° elbow	25
E3434M	19 mm x 3/4" BSP male 90° elbow	25
E10G12M	25 mm x 1/2" BSP male 90° elbow	25
E10G34M	25 mm x 3/4" BSP male 90° elbow	25

### ELBOWS

Corner



MICRO IRRIGATION	SIZE	CARTON QTY
3CJ	19 mm x 1/2" BSP male corner elbow	25

# MICRO IRRIGATION

Static Fittings for LDPE Pipe

## RANGE INFORMATION

# MICRO IRRIGATION

Static Fittings for LDPE Pipe

## RANGE INFORMATION

### DIRECTORS



MICRO IRRIGATION	SIZE	BAG QTY
D3812	10 mm tail x 1/2" BSP male	25
D3834	10 mm tail x 3/4" BSP male	25
D1214	13 mm tail x 1/4" BSP male with washer	25
D1212	13 mm tail x 1/2" BSP male	25
D1234	13 mm tail x 3/4" BSP male	25
D1325	13 mm tail x 1" BSP male	25
D5812	16 mm tail x 1/2" BSP male	25
D3412	19 mm tail x 1/2" BSP male	25
D3434	19 mm tail x 3/4" BSP male	25
D1925	19 mm tail x 1" BSP male	25
D1034	25 mm tail x 3/4" BSP male	25
D1010	25 mm tail x 1" BSP male	25
D11410	32 mm tail x 1" BSP male	25

### CROSS Four Way



MICRO IRRIGATION	SIZE	BAG QTY
C12	Cross 13 mm	25

### SNAP COUPLINGS



MICRO IRRIGATION	SIZE	BAG QTY
AS13	13 mm barb x 13 mm snap coupler	25
AS1319	19 mm barb x 13 mm snap coupler	25

Snap Coupler suits garden hose snap-on quick connectors

### NUT WITH BARBED TAIL



MICRO IRRIGATION	SIZE	BAG QTY
N3412	3/4" BSP Nut with Washer x 13 mm tail	25
N3458	3/4" BSP Nut with Washer x 16 mm tail	25
N3434	3/4" BSP Nut with Washer x 19 mm tail	25
N1012	1" BSP Nut with Washer x 13 mm tail	25
N1058	1" BSP Nut with Washer x 16 mm tail	25
N1034	1" BSP Nut with Washer x 19 mm tail	25
N1010	1" BSP Nut with Washer x 25 mm tail	25

### NUT WITH MALE THREADED TAIL



MICRO IRRIGATION	SIZE	BAG QTY
N1034M	1" BSP Nut with Washer x 3/4" Male threaded tail	25

### BACK TO BACK NUTS



MICRO IRRIGATION	SIZE	BAG QTY
BBN3434	3/4" BSP Nut back to back with 3/4" Interconnection	25
BN1010	1" BSP Nut back to back with 1" Interconnection	25

### NUT (with hole)



MICRO IRRIGATION	SIZE	BAG QTY
AN34	3/4" BSP white Acetal Nut without washer	25
N34	3/4" BSP Nut with washer	25

### BLANK NUTS & WASHERS



MICRO IRRIGATION	SIZE	BAG QTY
BN34	3/4" BSP Blank Nut with washer	25
BN10	1" BSP Blank Nut with washer	25

### END PLUGS



MICRO IRRIGATION	SIZE	BAG QTY
EP38	End plug 10 mm	25
EP12	End plug 13 mm	25
EP58	End plug 16 mm	25
EP34	End plug 19 mm	25
EP10	End plug 25 mm	25
EP114	End plug 32 mm	25

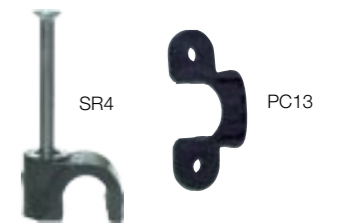
### SEALING SLEEVES



MICRO IRRIGATION	SIZE	BAG QTY
SS12	13 mm end sealing sleeve	25
SS58	16 mm end sealing sleeve	25
SS34	19 mm end sealing sleeve	25

Alternative to End Plug. Fold PE tube back and forth to seal, secure with Sealing Sleeve

### PIPE SADDLE CLAMPS



MICRO IRRIGATION	SIZE	BAG QTY
PC13	Pipe saddle 13 mm	100
PC34	Pipe saddle 19 mm	100
SR4	Riser Tube Saddle	100

### TUBE CLIPS



MICRO IRRIGATION	SUITS POLY TUBE	MINIMAL TUBE DIAMETER	BAG QTY
CT10		10 mm	50
CT13	10 mm	13 mm	100
CT15	13 mm	15 mm	100
CT17		17 mm	100
CT19	16 mm	19 mm	100
CT20		20 mm	50
CT23	19 mm	23 mm	100
CT24		24 mm	100
CT29	25 mm	29 mm	100
CT32		32 mm	50
CT37	32 mm	37 mm	100
CT40		40 mm	50

# MICRO IRRIGATION In-Line Valves

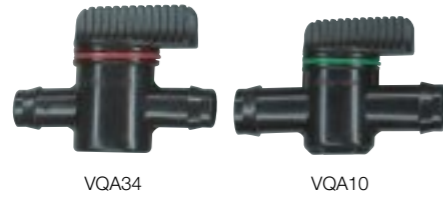
## RANGE INFORMATION

# Take-Offs and Grommets MICRO IRRIGATION

## RANGE INFORMATION

### VALVE QUICK ACTION

Barb x Barb



MICRO IRRIGATION	SIZE	BAG QTY
VQA38	Quick Action Shut Off Valve 10 mm tails (Black ring)	20
VQA12	Quick Action Shut Off Valve 13 mm tails (Black ring)	20
VQA58	Quick Action Shut Off Valve 16 mm tails (Black ring)	20
VQA34	Quick Action Shut Off Valve 19 mm tails (Red ring)	20
VQA10	Quick Action Shut Off Valve 25 mm tails (Green ring)	20

Philmac recommend the use of Ratchet Clips with valves

### VALVE QUICK ACTION

Barb x Male Thread



MICRO IRRIGATION	SIZE	BAG QTY
VT1212	Valve quick action 13 mm barb x 1/2" BSP male (1/2" MPT)	50
VT1234	Valve quick action 13 mm barb x 3/4" BSP male (3/4" MPT)	50
VT5812	Valve quick action 16 mm barb x 1/2" BSP male (1/2" MPT)	50
VT5834	Valve quick action 16 mm barb x 3/4" BSP male (3/4" MPT)	50

Philmac recommend the use of Ratchet Clips with valves

### Pressure Controllers and Filters

#### PRESSURE CONTROLLER

Threaded inlet and outlet



MICRO IRRIGATION	SIZE	BAG QTY
SPPR10	10 psi Regulator. 3/4" Male Inlet x 3/4" Female Outlet (Bulk Pack)	1
SPPR15	15 psi Regulator. 3/4" Male Inlet x 3/4" Female Outlet (Bulk Pack)	1
SPPR20	20 psi Regulator. 3/4" Male Inlet x 3/4" Female Outlet (Bulk Pack)	1
SPPR30	30 psi Regulator. 3/4" Male Inlet x 3/4" Female Outlet (Bulk Pack)	1

#### FILTERS

with 50 Mesh 'B' cartridge



MICRO IRRIGATION	SIZE	BAG QTY
1-IS-12BB	Black Case - 13 mm tails with both ends	1
1-IS-58BB	Black Case - 13 mm tails with both ends	1
1-IS-34BB	Black Case - 13 mm tails with both ends	1
1-IS-10BB	Black Case - 13 mm tails with both ends	1

Includes I-IS-B black case, 2 end caps and BC-50 50 mesh filter

#### CASES ONLY



MICRO IRRIGATION	SIZE	BAG QTY
1-IS-B	150 mm Black Case 1" BSP male thread both ends - (Bulk Pack)	20
1-IS-C	150 mm (Poly Carbonate) Clear Case 1" BSP male thread both ends (Bulk pack)	20

#### FILTER CARTRIDGES ONLY



MICRO IRRIGATION	SIZE	BAG QTY
AC-30	19 mm Dia. x 135 mm long, Cartridge 30 mesh (Coarse)	20
BC-50	19 mm Dia. x 135 mm long, Cartridge 50 mesh (Fine)	20

### RIGID PIPE (eg PVC, MDPE, HDPE, GI etc)

#### GROMMET - DOUBLE FLANGED RUBBER

For thin walled PVC pipes only



MICRO IRRIGATION	SIZE	BAG QTY
GR56	8 mm I.D. Double Flange Rubber Grommet (to suit TO5612)	50
GR34	19 mm I.D. Double Flange Rubber Grommet (to suit TO3458, TO3434, TO3410, TO3114)	50

#### GROMMET - TOP HAT RUBBER

Suits any rigid pipe (PVC, MDPE, HDPE, GI etc)



MICRO IRRIGATION	SIZE	BAG QTY
GR12TH	13 mm I.D. Top Hat Rubber Grommet (to suit TO1234, TO1212)	50
GR58TH	16 mm I.D. Top Hat Rubber Grommet (to suit TO5812, TO5858)	50
GR34TH	19 mm I.D. Top Hat Rubber Grommet (to suit TO3458, TO3434, TO3410, TO34114)	50

#### TAKE-OFF

To suit 8mm ID Grommets

MICRO IRRIGATION	SIZE	BAG QTY
TO5612	Take Off - 8 mm grommet inlet x 13 mm poly tube	50

#### TAKE-OFF

To suit 13mm ID Grommets

MICRO IRRIGATION	SIZE	BAG QTY
TO1212	Take Off - 13 mm grommet inlet x 13 mm poly tube	50
TO1234	Take-off - 13 mm grommet inlet x 19 mm poly tube	50

#### TAKE-OFF

To suit 16mm ID Grommets

MICRO IRRIGATION	SIZE	BAG QTY
TO5812	Take-off - 16 mm grommet inlet x 13 mm poly tube	50
TO5858	Take-off - 16 mm grommet inlet x 16 mm poly tube	50

#### TAKE-OFF

To suit 19mm ID Grommets



MICRO IRRIGATION	SIZE	BAG QTY
TO3458	Take-off - 19 mm grommet inlet x 16 mm poly tube	50
TO3434	Take-off - 19 mm grommet inlet x 19 mm poly tube	50
TO3410	Take-off - 19 mm grommet inlet x 25 mm poly tube	50
TO3414	Take-off - 19 mm grommet inlet x 32 mm poly tube	50

#### LDPE PIPE -DIRECT INSERTION

MICRO IRRIGATION	SIZE	BAG QTY
TO0610	6 mm tail x 10 mm tail take off adaptor	50
TOE0610	6 mm x 10 mm 90° take off elbow adaptor	50

# MICRO IRRIGATION

Micro Fittings for 4 & 5mm Tube

## RANGE INFORMATION

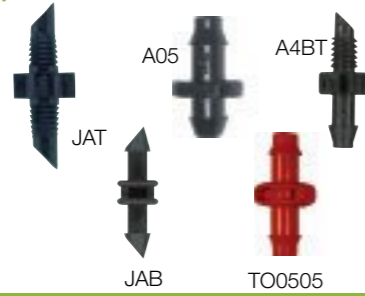
# MICRO IRRIGATION

Rigid Pipe Risers & Tube

## RANGE INFORMATION

### COUPLER/JOINER/ADAPTORS

Adaptors inserted into side of thin walled poly tube Joiner/Couplers to join lengths of tube



MICRO IRRIGATION	SIZE	BAG QTY
JAT	Adaptor 4 mm x 4 mm threaded	100
A4BT	Adaptor 4 mm barbed x 4 mm threaded	100
JAB	Adaptor/Joiner 4 mm x 4 mm barbed tails	100
A05	5 mm tail x 5 mm tail adaptor	50
TO0505	5 mm tail x 5 mm tail take off adaptor (high flow - red)	50

### COUPLER/JOINER REDUCER

MICRO IRRIGATION	SIZE	BAG QTY
AB54	Adaptor/Reducing 5 mm x 4 mm barbed tails	100

### TEE



MICRO IRRIGATION	SIZE	BAG QTY
T3M4M	Tee 3 mm and 4 mm barbed (Dual size barbs)	100
TB4	Tee 4 mm barbed	50

### ELBOW



MICRO IRRIGATION	SIZE	BAG QTY
EB4	Elbow 4 mm barbed	50

### CROSS



MICRO IRRIGATION	SIZE	BAG QTY
CB4	Cross 4 mm barbed	50

### REPAIR PLUGS



MICRO IRRIGATION	SIZE	BAG QTY
PG4	Repair Plug 4 mm	100
PR5	Repair Plug 5 mm	100

### FLOW CONTROL VALVE



MICRO IRRIGATION	SIZE	BAG QTY
V4T	Flow Control Valve 4 mm threaded	50

### RISER ADAPTOR



MICRO IRRIGATION	SIZE	BAG QTY
A1204	Poly Riser Jet Adaptor 1/2" female x 4 mm	25

To connect a 1/2" threaded pipe to 4 mm tube

### 4 mm RIGID RISER TUBE

Complete with 4 mm Threaded adaptor

MICRO IRRIGATION	SIZE	BAG QTY
RGR200	Rigid Riser Tube 200 mm with Adaptor (JAT)	100
RGR300	Rigid Riser Tube 300 mm with Adaptor (JAT)	100
RGR450	Rigid Riser Tube 450 mm with Adaptor (JAT)	100

### 4 mm (nominal) FLEXIBLE PVC THICK-WALLED TUBE



MICRO IRRIGATION	SIZE	BAG QTY
FR5/39	Multiflex Riser Tube 3.9 mm x 5 metre coil	1
FR25/39	Multiflex Riser Tube 3.9 mm x 25 metre coil	1
FR50/39	Multiflex Riser Tube 3.9 mm x 50 metre coil	1

### 5 mm FLEXIBLE PVC THICK-WALLED TUBE



MICRO IRRIGATION	SIZE	BAG QTY
FR50/5	Multiflex Riser Tube 5 mm x 50 metre coil	1

**Philmac Sales – Middle East**

**00971 50 5643 999**

**Email: [export@philmac.com.au](mailto:export@philmac.com.au)**

**Web: [www.philmac.com.au](http://www.philmac.com.au)**

**Head Office Philmac Pty Ltd**

ABN: 17 007 873 047

**47-59 Deeds Road  
North Plympton SA 5037 Australia**

**Ph: +61 8 8300 9200**

**[www.philmac.com.au](http://www.philmac.com.au)**



**The connection you can trust.**